

Burnaby Gardens, London, W4 3DS

Guide Price £550,000

**WHITMAN & CO.**

SALES · LETTINGS · COMMERCIAL

- Period conversion flat
- Bright and spacious reception room
- Popular residential road
- Two double bedrooms
- Attractive semi-detached building
- No onward chain

Tenure - Leasehold with share of freehold  
 Lease length - 96 Years remaining  
 Ground Rent - £0 pa  
 Service Charge - £452 pa  
 Local authority - Hounslow  
 Council tax - Band D

## THE PROPERTY

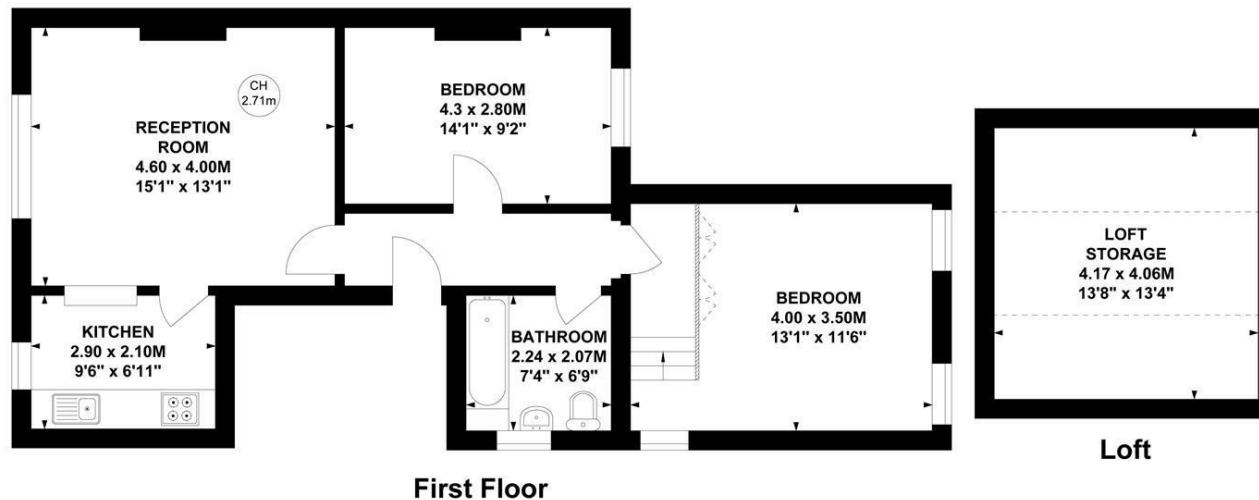
A lovely two bedroom first floor conversion flat within this attractive period semi-detached house located on this popular tree-lined residential road in the heart of the Grove Park area of Chiswick. The flat is well presented with a bright and spacious reception room with wood floors, two double bedrooms, a fitted kitchen, a bathroom and a good amount of loft storage. The flat also has a share of freehold. There is convenient access to local shops, cafes and restaurants, Strand on the Green riverside, Chiswick House and Grounds and Chiswick High Street with a number of local schools close by including OFSTED-rated outstanding Grove Park Primary. Transport links include Chiswick and Gunnersbury stations (8-9 mins walk), local bus routes and the A4/M4 for routes in and out of London. No onward chain.

## Burnaby Gardens, W4

Approximate Gross Internal Area  
**80.78 sq m / 869 sq ft**  
 (Including Loft Storage)  
**Loft Storage**  
**16.93 sq m / 182 sq ft**

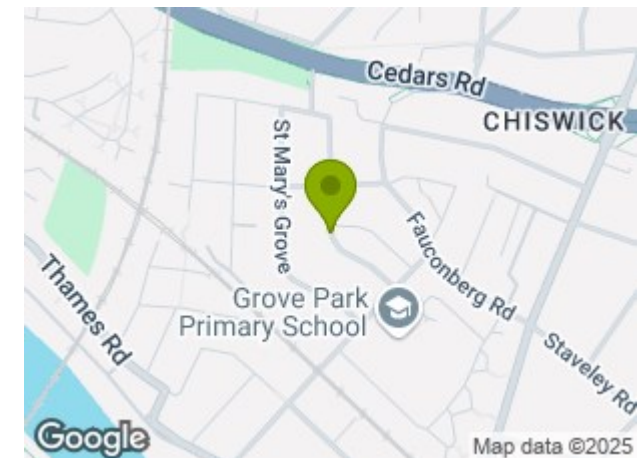


Key :  
 CH - Ceiling Height



Not to scale, for guidance only and must not be relied upon as a statement of fact.  
 All measurements and areas are approximate only

## SITUATION



5-7 Turnham Green Terrace, Chiswick, London, W4 1RG

Tel 020 8747 8800

E-mail [sales@whitmanandco.com](mailto:sales@whitmanandco.com)

Website [www.whitmanandco.com](http://www.whitmanandco.com)